

**Power Pump Drive
Application Data Sheet**

1 of 3

WPT Power Corporation
ATTN: Applications Dept.
P.O. Box 8148
Wichita Falls, TX 76307

940-761-1971
info@WPTpower.com
www.WPTpower.com



Application #: OFFICE USE ONLY

Name / Title: _____

Company Name: _____

Phone: _____

Address: _____

Email: _____

City/ State/ Zip: _____

WPT Power Pump Drive

General Application Information

Machine Make & Model: _____

Quantity: _____

General Application Description: _____

Engine

Make & Model: _____

Maximum Engine Torque: _____ @ _____ r/min

Maximum Engine Power: _____ @ _____ r/min

Maximum Engine Speed: _____ r/min

Diesel Gas Electric

Installation

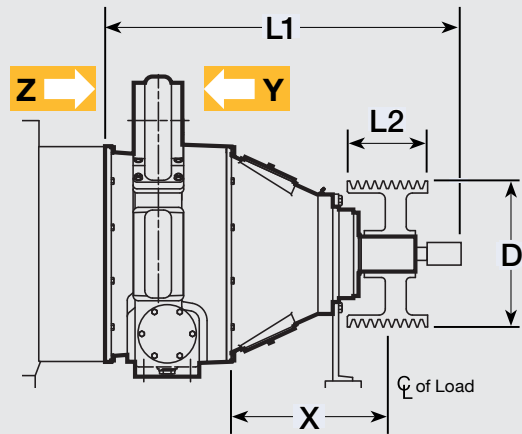
Engine-Mounted: _____ | _____
(SAE Housing Size) (SAE Flywheel Size)

Flywheel Pilot Bearing Bore Diameter: _____

Drive Information

In-Line (shaft-to-shaft)

Belt Driven



Type of Belt Tensioner

Hydraulic Pneumatic Spring Mechanical

X Distance: _____

Overall Length, L1: _____

Sheave Width, L2: _____

Sheave Diameter, D: _____

Belt Type: _____

Preferred Actuator Type

Hydraulic

Type of Operation: HPU PYTHON™ Other

Pneumatic

Mechanical

Type of Operation: By Hand With Actuator Other

Application Details

Input Power to PTO: _____ @ _____ r/min

RPM at Time of Engagement: _____

Slip Time During Clutch Engagement: _____

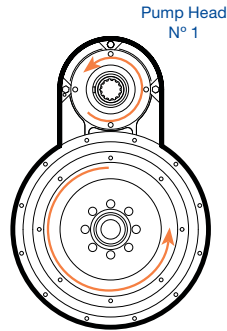
Inertia of Driven Equipment: _____

Frequency of Engagements: _____

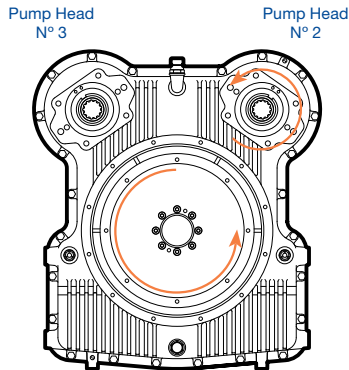
Application #: OFFICE USE ONLY

All views from output (Y side)

WPD-03



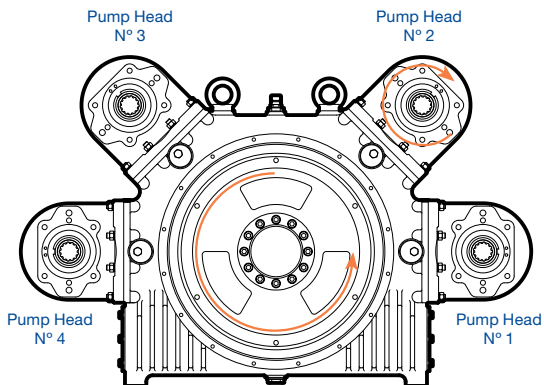
WPD-00



WPD-01

WPD-02

WPD-01
 1 : 1
 0.88 : 1



Views from input (Z side)

Pump Information

Pump Type** | Absorbed Power

Head 1: SAE* _____ : _____ | _____

Head 2: SAE* _____ : _____ | _____

Head 3: SAE* _____ : _____ | _____

Head 4: SAE* _____ : _____ | _____

Duty Cycle

% of Time | % of Power

Head 1: _____ | _____

Head 2: _____ | _____

Head 3: _____ | _____

Head 4: _____ | _____

Views from output (Y side)

Pump Information

Pump Type** | Absorbed Power

Head 1: SAE* _____ : _____ | _____

Head 2: SAE* _____ : _____ | _____

Head 3: SAE* _____ : _____ | _____

Head 4: SAE* _____ : _____ | _____

Duty Cycle

% of Time | % of Power

Head 1: _____ | _____

Head 2: _____ | _____

Head 3: _____ | _____

Head 4: _____ | _____

*Splined only: SAE B (2 holes), SAE B-B (2 holes), SAE C (2 or 4 holes), SAE D (4 holes), SAE E (4 holes)

**Piston, Vane, Gear, Plunger, Centrifugal, etc.

**Power Pump Drive
Application Data Sheet**

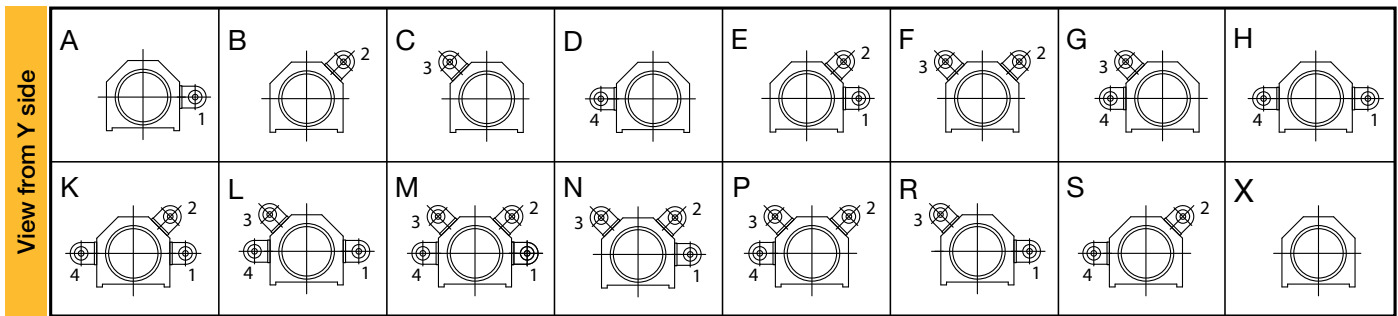
3 of 3

WPT Power Corporation
ATTN: Applications Dept.
P.O. Box 8148
Wichita Falls, TX 76307

940-761-1971
info@WPTpower.com
www.WPTpower.com



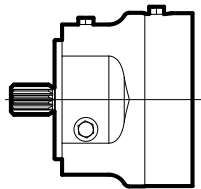
Application #: OFFICE USE ONLY



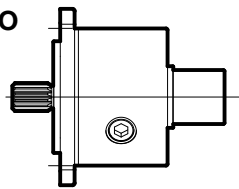
WPT Power Pump Drive Accessories

Disconnect Clutch

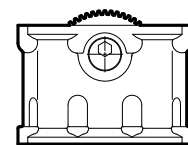
Oil Actuated Clutch
SAE C
Input and Output



Head PTO
SAE C



Head Extension



Accessories (View from Z side)

Head 1: Head 2: Head 3: Head 4:

Disconnect Clutch

Head PTO*

Head Extension**

*When Head PTO is used to drive pulley, specify pulley type and effective diameter.
**When head extension is used, the pump head rotation is reversed.

Accessories (View from Y side)

Head 1: Head 2: Head 3: Head 4:

Disconnect Clutch

Head PTO*

Head Extension**

*When PTO is used to drive pulley, specify pulley type and effective diameter.
**When head extension is used, the pump head rotation is reversed.

$$kW = hp * 0.746$$

$$hp = \frac{\text{gal/min} * \text{lbf/in}^2}{1714}$$

$$hp = \frac{\text{r/min} * \text{lbf-ft}}{5252}$$

$$kW = \frac{\text{l/min} * \text{bar}}{600}$$

$$kW = \frac{\text{r/min} * \text{N}\cdot\text{m}}{9549}$$

Special Requirements