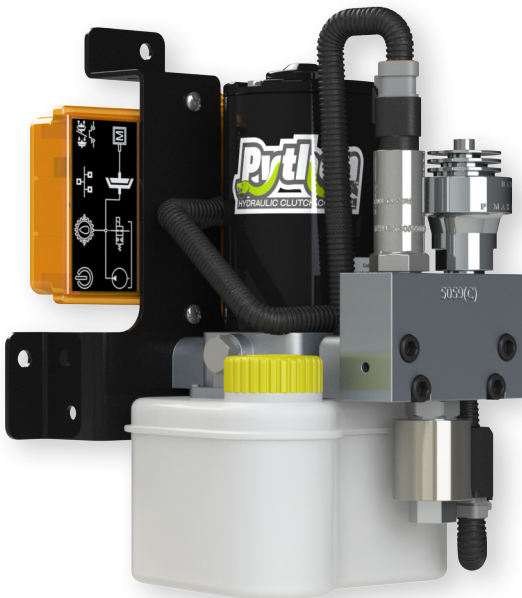


Python™ Hydraulic Clutch Control

WPT
POWER
①②③④⑤⑥⑦⑧⑨⑩⑪⑫⑬⑭⑮⑯⑰⑱⑲



WPT Power's patented Python™ Hydraulic Clutch Control is the perfect product for any equipment with an engine that struggles during machine startup. With the push of a button, our Python™ will smoothly engage any WPT Type 1 and Type 2 Power Take-Off to accelerate the most demanding loads. It eliminates the need for bump starting heavy loads which can stall or damage the engine. This product was designed and tested alongside seasoned experts in the Off-Highway Equipment industry, and was specially engineered for applications with high inertia loads. WPT Power's patented Python™ is perfect for the OEM as well as the end user.

- Eliminates operator-related engagement abuse.
- Maximizes the clutch's wear component life.
- Optimizes clutch engagement for smooth operation.
- Can be easily integrated into OEM control systems.
- Designed & tested to operate in cold weather conditions.
- Self contained unit. No need for machine hydraulics.
- Compatible with SAE J1939 engine connections.
- Available in 12 or 24 volt.